



Mobile Networks

Working together to deliver
a better connected world

Mobile networks must
continue to expand and
evolve in response to the
growth of connections
and mobile data.

01

Mobile networks connect the unconnected

6.6 billion mobile connections¹

45% of the world's population uses mobile communications

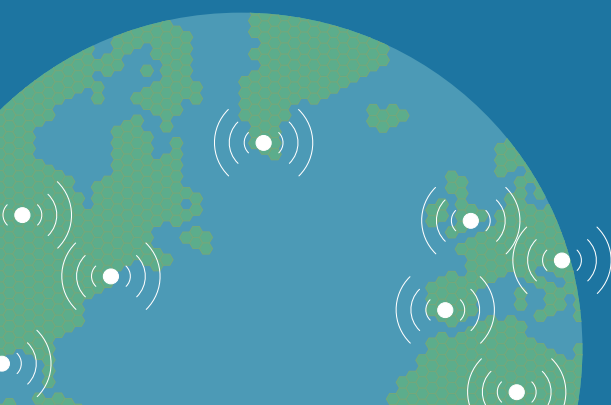
On average consumers have 1.5 SIM cards

People own multiple mobile devices

02

Growth in connections between people and machine-to-machine

Global machine-to-machine connections forecast to rise from 2 billion in 2011 to 12 billion in 2020².



Mobile networks are connecting people and connecting things.



Healthcare



Smart energy



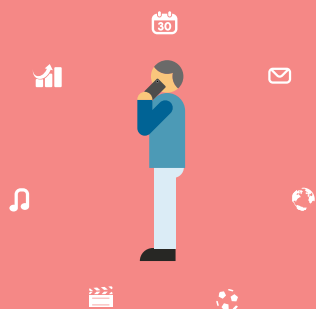
Cars



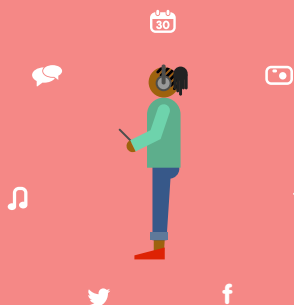
Education

03

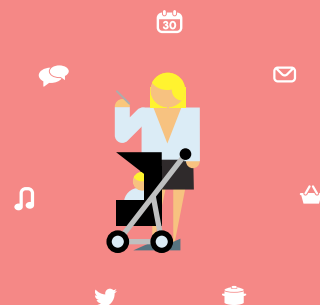
Increasing reliance on data services on the move and in-buildings



Mobile connections have changed the way we live.



Network growth and evolution is driven by more:



- subscribers
- data services
- in-building use

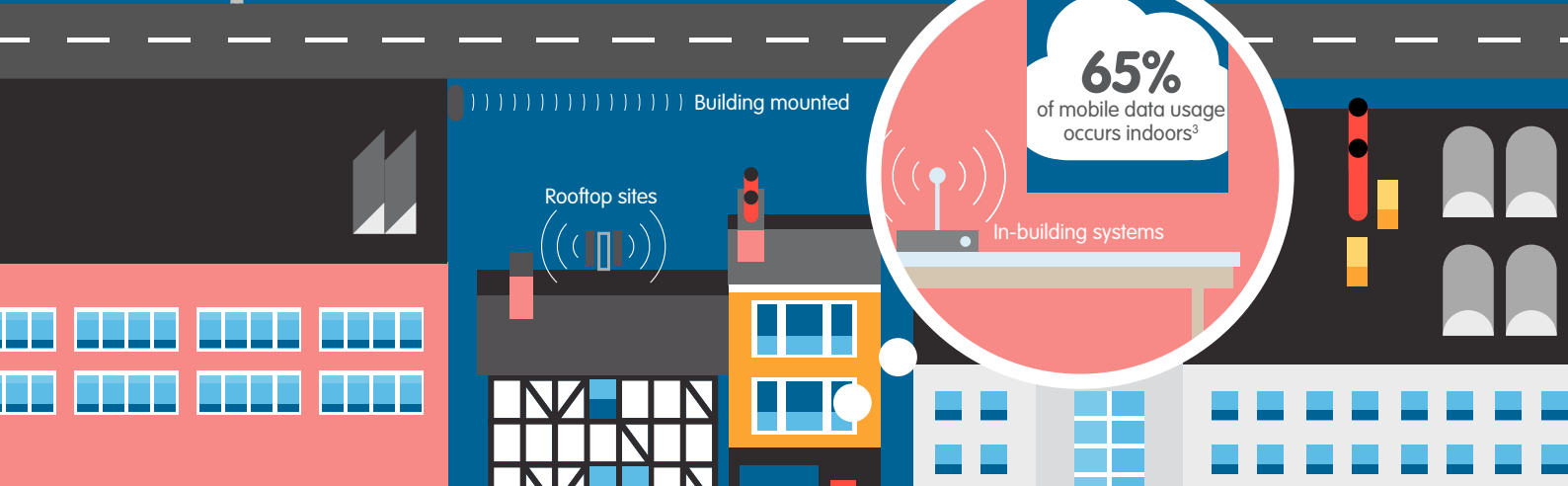
04

Mobile services are connected by a network of antennas

Small cells



Free-standing masts

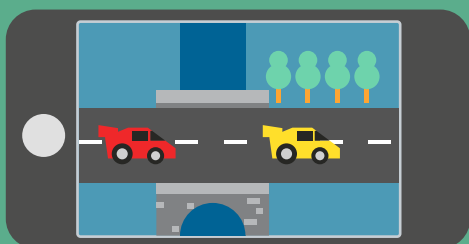


65% of mobile data usage occurs indoors³

In-building systems

05

A better signal means



Faster data



Longer battery life

06

Mobile networks are designed to comply with safety limits



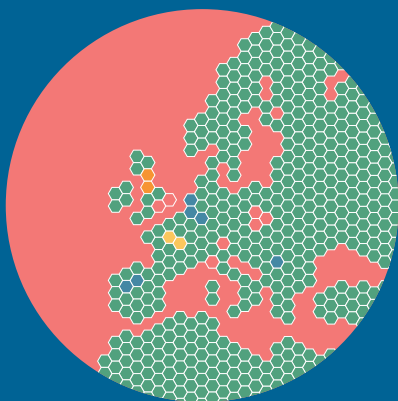
Network antennas and mobile devices use low power radio signals.



Safety limits have been developed by the International Commission on Non-Ionizing Radiation Protection (ICNIRP)⁴.

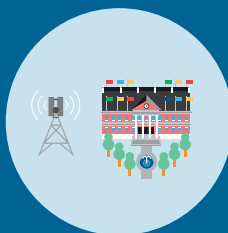
The World Health Organization recommends that governments adopt the ICNIRP limits.

Streamline decision making



Each antenna site is part of a national cellular network.

Antenna site approvals should be harmonised.

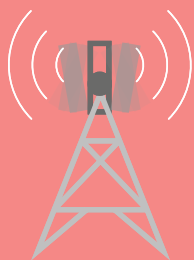


Easier access to government buildings and land supports mobile networks.

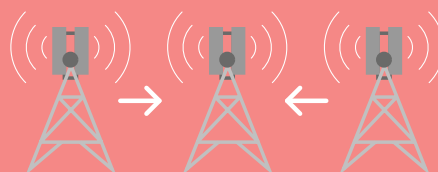
Simplified procedures should apply to...



Small antennas



Modifications to existing sites



Co-locations



Good mobile network policy supports access to services

Mobile networks working together to deliver... a better connected world



www.gsma.com

View the associated animation at www.gsma.com/networkpolicy

1. 1.5 SIM cards: Average number of SIMs per user in developed world, the global average is 1.85 cards Wireless Intelligence, Global mobile penetration – subscribers versus connections, October 2012.

2. Machina Research quoted in GSMA position paper Connected Life, October 2011.

3. Cisco Visual Networking Index: Global Mobile Data Traffic Forecast Update, 2010–2015, 1 February 2011.

4. WHO Framework for Developing Health-Based Standards, 2006.