



Skylo and Verizon Enable Seamless Connectivity from Cellular to Satellite

Paul Hanton

Vice President of Global Carrier Partnerships,
Skylo Technologies

Event Partner



Connected Industries
Lead Partner

AI Networks Theme
Headline Sponsor



Official Broadcast Partner

Official Media Partners



THE WALL STREET JOURNAL.
BARRON'S GROUP

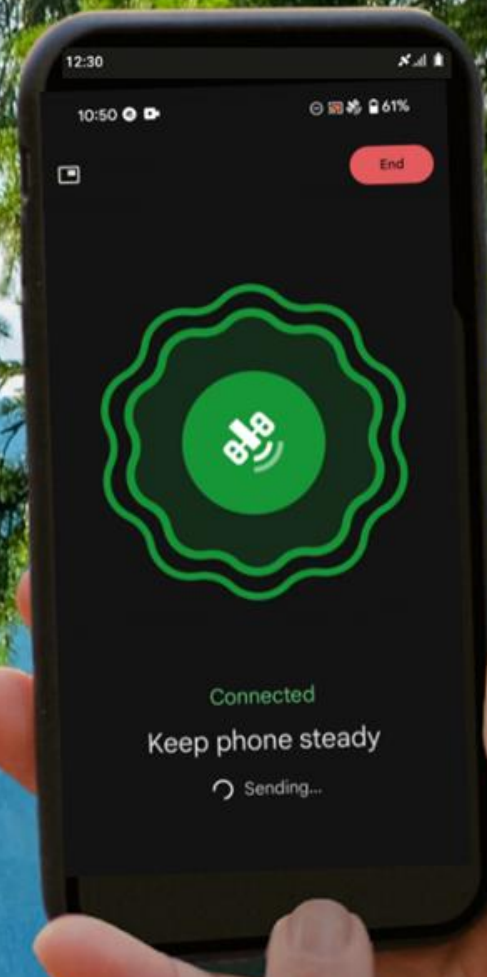
An Event Of





Never Lose Coverage

October 8, 2024



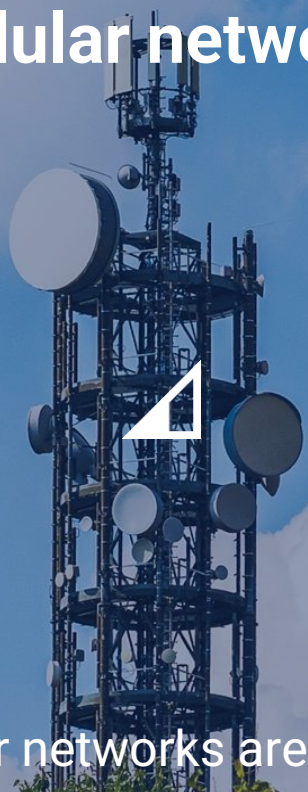
Skylo is a commercially live, direct to device connectivity provider over our satellite network in partnership with MNO's and IoT MVNO's around the world

We use geostationary satellites with coverage today across >40 countries, over 4 continents.

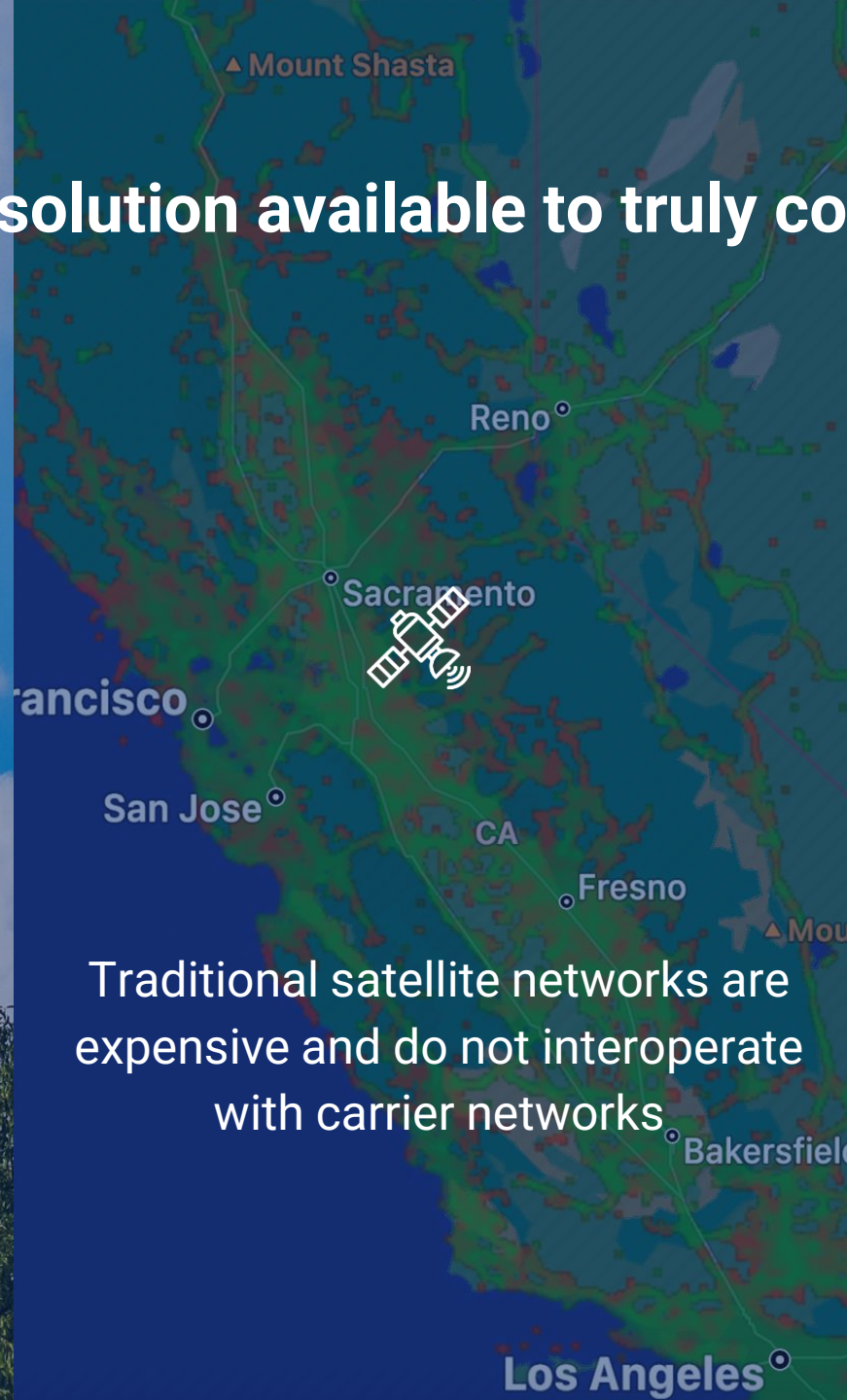
Leveraging 3GPP r17 standards, without the need for special hardware,



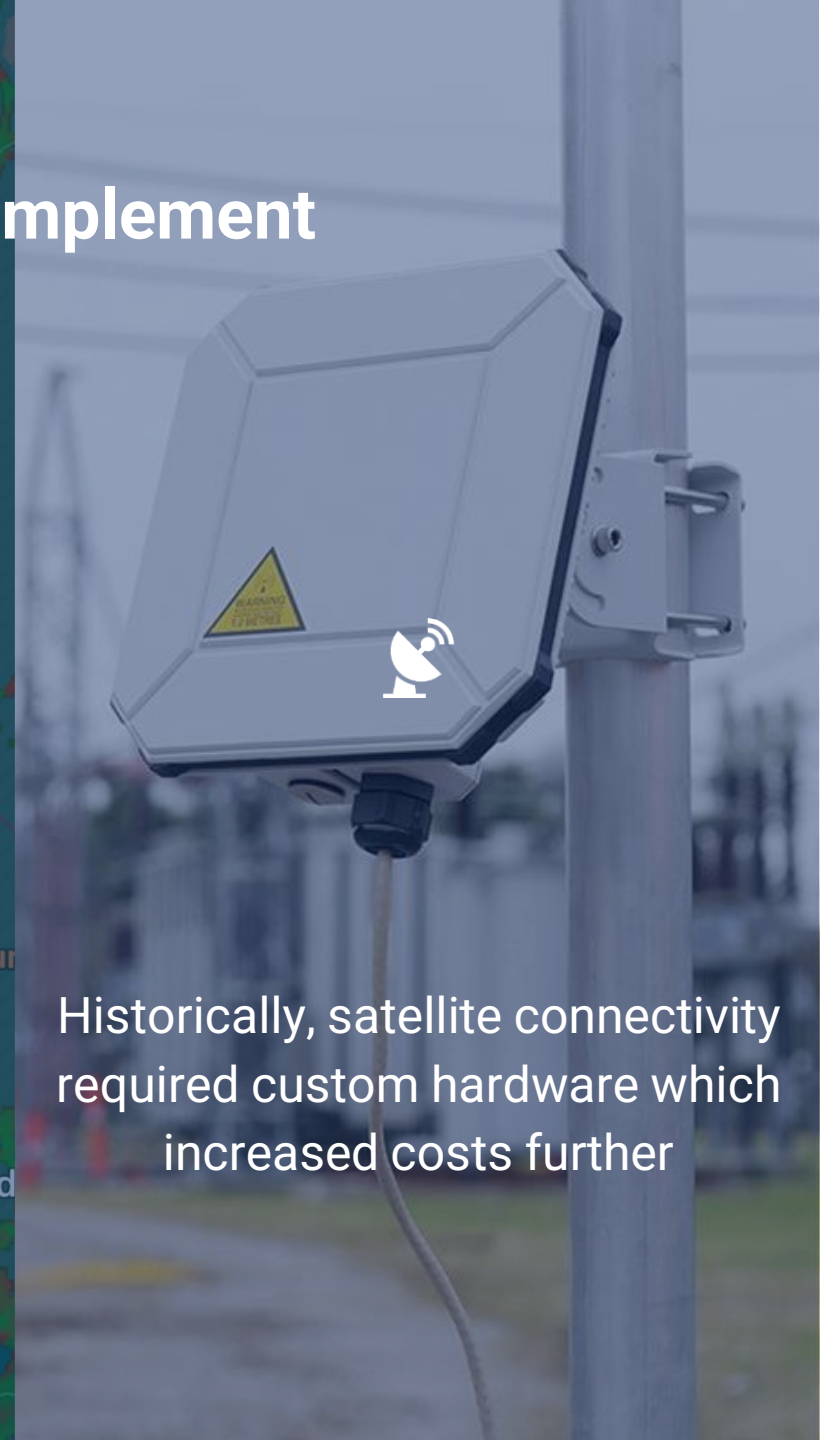
Skylo is the only NTN solution available to truly complement cellular networks



Carrier networks are focused on population centers yet cover just 15% of global surface



Traditional satellite networks are expensive and do not interoperate with carrier networks



Historically, satellite connectivity required custom hardware which increased costs further

Commercially live across 15.3M mi²

Supported by Earth stations around the world and proprietary Skylo RAN & Core, 24/7 NOC



Our Non-Terrestrial Network service is 'direct-to-device'



Access satellite networks for 2-way text messages and SMS, location sharing, app data, and SOS



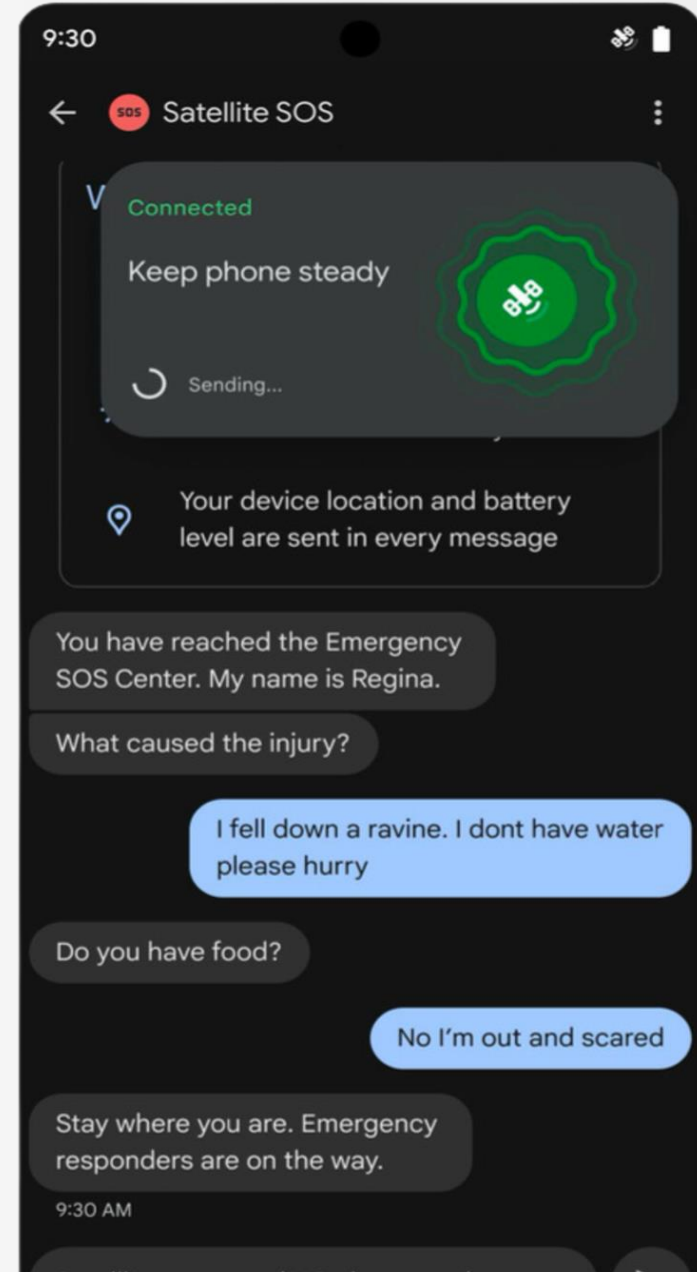
Seamless switching between cellular and satellite; **no carrier spectrum needed**



Connect with your existing, compatible device; **no extra hardware needed**



Addresses 2.5B+ devices/year – frictionless way to add dual-mode connectivity to any cellular device



For the curious, the explorers, and the adventurers

You did it!



Did you manage to catch the sunset?

Yup. It was incredible :). I'm exhausted, and Jessica is still a mile behind so I have bragging rights.



:D See you tomorrow

Can't wait. Bring your DSLR, the views are out of this world.

Never Lose Coverage



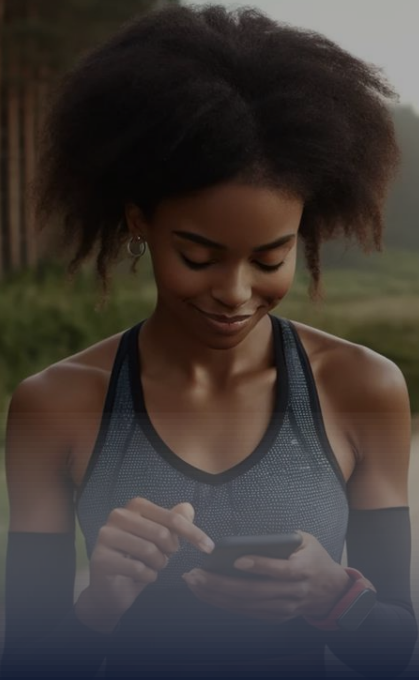
An aerial photograph of a city grid, likely New York City, showing a dense network of streets and buildings. A semi-transparent network overlay is visible, consisting of numerous small, glowing blue and white nodes connected by thin lines, representing a comprehensive network coverage. The overlay is most prominent in the central and lower-right areas of the image.

Complete network overlay

We all experience occasional dead zones and micro holes in network coverage as we go about our daily lives. Skylo complements carrier networks for continuous, comprehensive & affordable connectivity.

With smartphones, wearables, and trackers that are now better connected than ever before, stay in touch with the things in life that matter most.

We see 3 key markets with huge potential for satellite connectivity



Consumer

Satellite messaging and SOS on consumer smartphones and wearables



Automotive

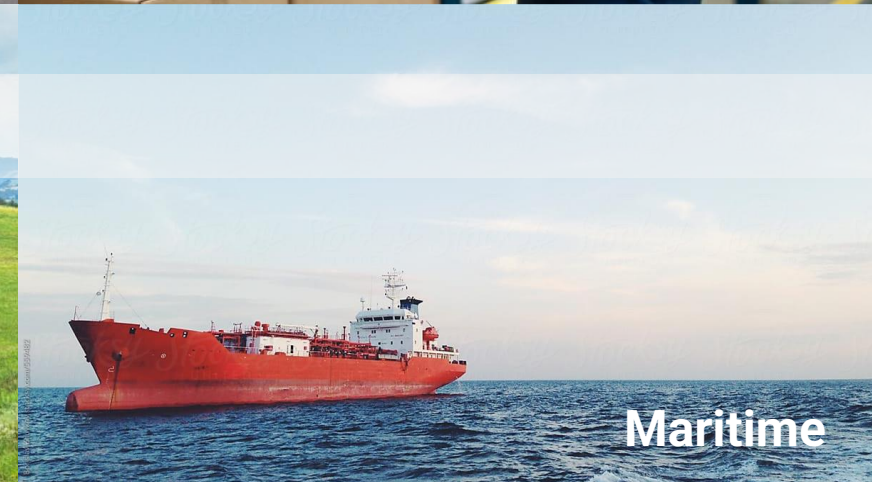
Track and monitor automotive health remotely + EV stations, routing, door unlock



IoT

Enables deeper industrial connections - even in remote areas

Within IoT, seamless connectivity between cellular + satellite enables exciting new monitoring and assurance capabilities



Satellite IoT Trial with Verizon

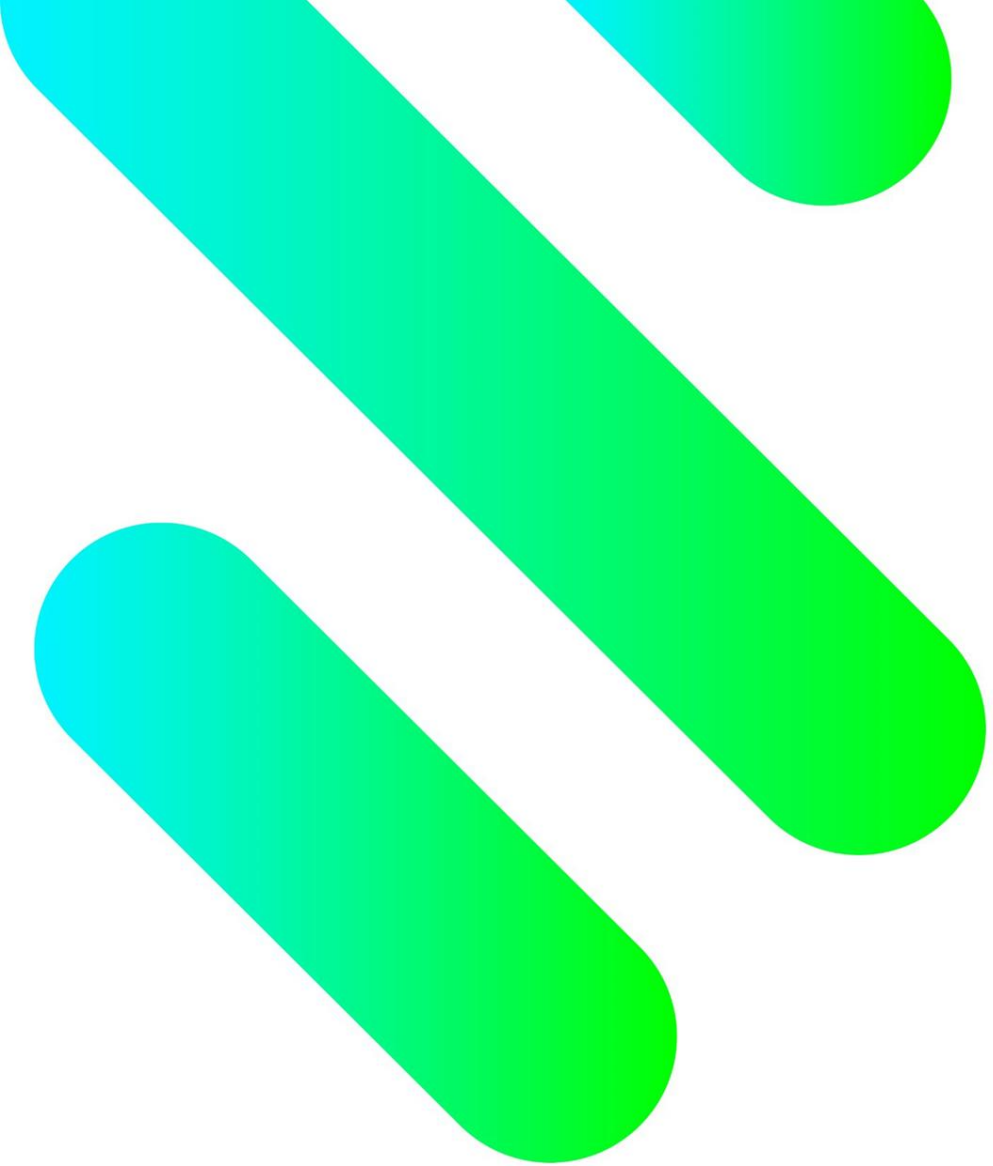
- Proof of concept integrating Skylo's satellite network with Verizon's IoT network
- Ensured authentication procedures; provided seamless data interconnects from cellular network to satellite network
- Conducted interoperability tests where IoT devices were able to communicate with both networks
 - Simulated roaming scenarios
 - Ran field tests switching between networks based on defined scenarios



Network Redundancy

- Satellite SOS in every pocket
- Works even if cell towers are down
- Broadcast SOS alerts
- Prioritized SOS and emergency response





Email: paul.hanton@skylo.tech

Online: skylo.tech

United States
2301 Leghorn St
Mountain View
California 94043

India
Salarpuria Sattva Magnificia,
Old Madras Rd, Pai Layout,
Mahadevapura, Bengaluru,
Karnataka 560016

Finland
A Grid, Otakaari 5
3rd floor
Espoo 02150

